

Plan for Mock OSCEs: Afternoon of Thursday 15th March 2018
 Venue: The Training Centre at Greenlane – [address details and maps here](#)

AFTERNOON: SHORT CIRCUIT				
	1.30pm	1.40	1.50	2.00
	10 min	10 min	10 min	10 min
Stn S1 Room 619	Boris 2 min reading 8 min OSCE	Ingrid 2 min reading 8 min OSCE	Clianna 2 min reading 8 min OSCE	Karim 2 min reading 8 min OSCE
Stn S2 Room 6	Karim 2 min reading 8 min OSCE	Boris 2 min reading 8 min OSCE	Ingrid 2 min reading 8 min OSCE	Clianna 2 min reading 8 min OSCE
Stn S3 Corner Room	Clianna 2 min reading 8 min OSCE	Karim 2 min reading 8 min OSCE	Boris 2 min reading 8 min OSCE	Ingrid 2 min reading 8 min OSCE
Stn S4 Main Teaching Rm	Ingrid 2 min reading 8 min OSCE	Clianna 2 min reading 8 min OSCE	Karim 2 min reading 8 min OSCE	Boris 2 min reading 8 min OSCE

Short Circuit ends 2.10pm

**2.10 - 2.50pm afternoon tea break (a little longer than candidates get in the real thing)
 (except for Ingrid who only gets a 20 min break)**

Candidates: Boris Arora, Clianna Lavelle, Ingrid O'Connor, Karim Salem

AFTERNOON: LONG CIRCUIT					
	2.30pm	2.50	3.10	3.30	3.50
	20 min	20 min	20 min	20 min	20 min
Stn L1 Lounge		Clianna 5 min reading 15 min OSCE	Ingrid 5 min reading 15 min OSCE	Boris 5 min reading 15 min OSCE	Karim 5 min reading 15 min OSCE
Stn L2 Rm 602		Karim 5 min reading 15 min OSCE	Clianna 5 min reading 15 min OSCE	Ingrid 5 min reading 15 min OSCE	Boris 5 min reading 15 min OSCE
Bye for L3 Stairwell alcove	Ingrid 20 min reading	Boris 20 min reading	Karim 20 min reading	Clianna 20 min reading	-
Station L3 Room 603		Ingrid 5 min reading 15 min OSCE	Boris 5 min reading 15 min OSCE	Karim 5 min reading 15 min OSCE	Clianna 5 min reading 15 min OSCE

Long Circuit ends 4.10pm

(followed by a brief general feedback session with any who can stay, for a further 30 min)

Candidates: Boris Arora, Clianna Lavelle, Ingrid O'Connor, Karim Salem

Short Circuit Plan for Stations

Afternoon (1.30 - 2.10pm)		
Station S1 Room 619 (max. 1 observer)	Roleplayer Examiner	Tony Kautoke Joy Hodgson
Station S2 Room 6 (no observer)	(no roleplayer) Examiner	Rhona Sommerville
Station S3 Corner Room (max. 1 observer)	Roleplayer Examiner	Maithri Gurusinghe James Gardiner
Station S4 Main Teaching Room (max. 2 observers)	Roleplayer Examiner	Yu Mwee Tan Oliver Rooke

Long Circuit Plan for Stations

Afternoon (2.50 - 4.10pm)		
Station L1 Lounge (max. 2 observers)	Roleplayer Examiner 1 Examiner 2	Jo Wang Vijay Kumar Han Chung Lim
Station L2 Room 602 (max. 2 observers)	Roleplayer Examiner 1 Examiner 2	Hussain Alyami Mythili Jayasundaram Gary Cheung
Station L3 Room 603 (max. 2 observers)	Roleplayer Examiner 1 Examiner 2	Song Chan Marta Hunter Vavrova James Gardiner

Roleplayers

Yu Mwee Tan; Hussain Alyami; Tony Kautoke; Jo Wang; Maithri Gurusinghe; Song Chan

Observers:

Han Chung Lim, John Park, Mike Ngawati, roleplayers who've not yet done or who've finished their stations

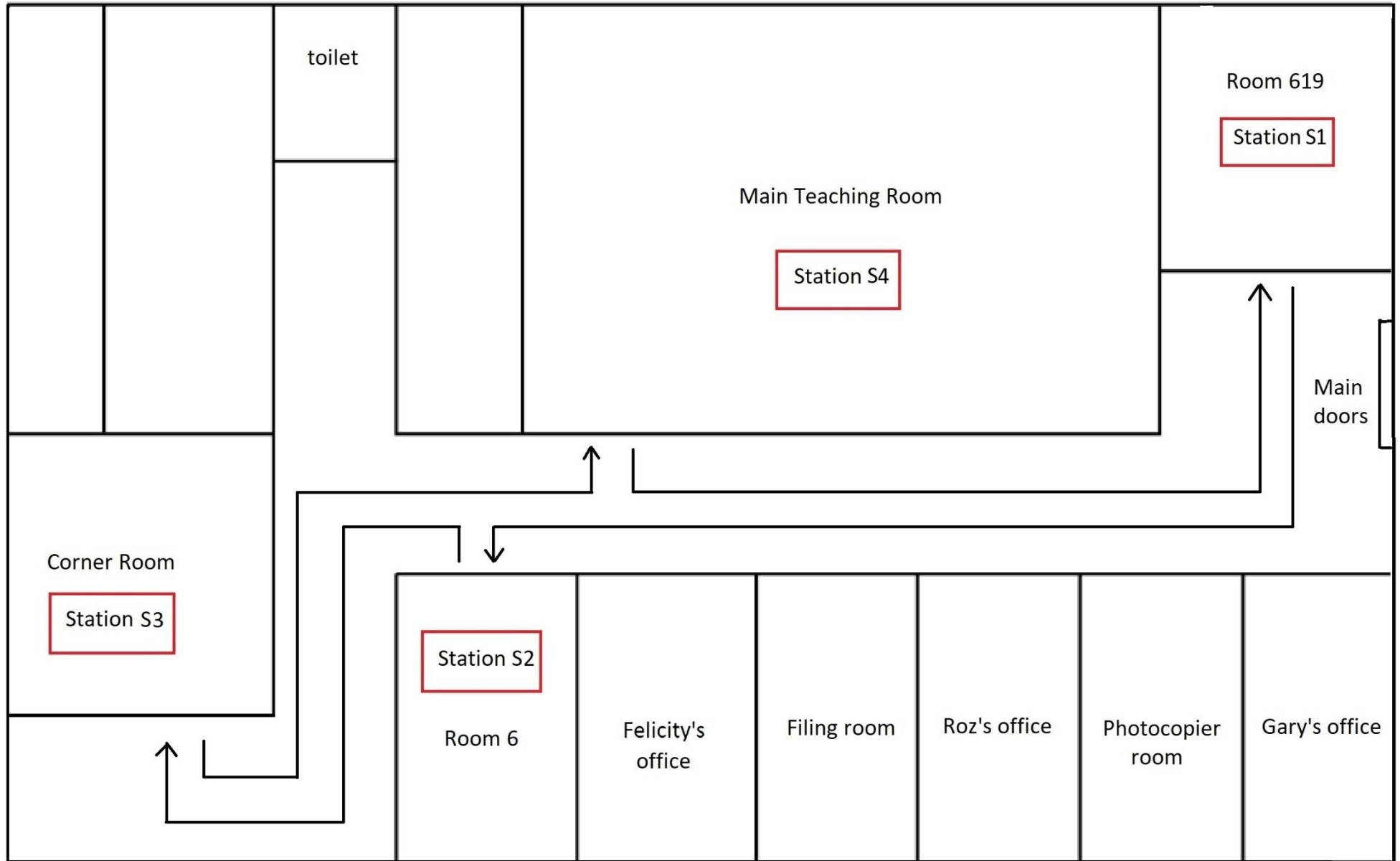
Examiners

Joy Hodgson; Rhona Sommerville; James Gardiner; Oliver Rooke; Marta Hunter Vavrova; Mythili Jayasundaram; Gary Cheung; Vijay Kumar; Han Chung Lim;

Candidates:

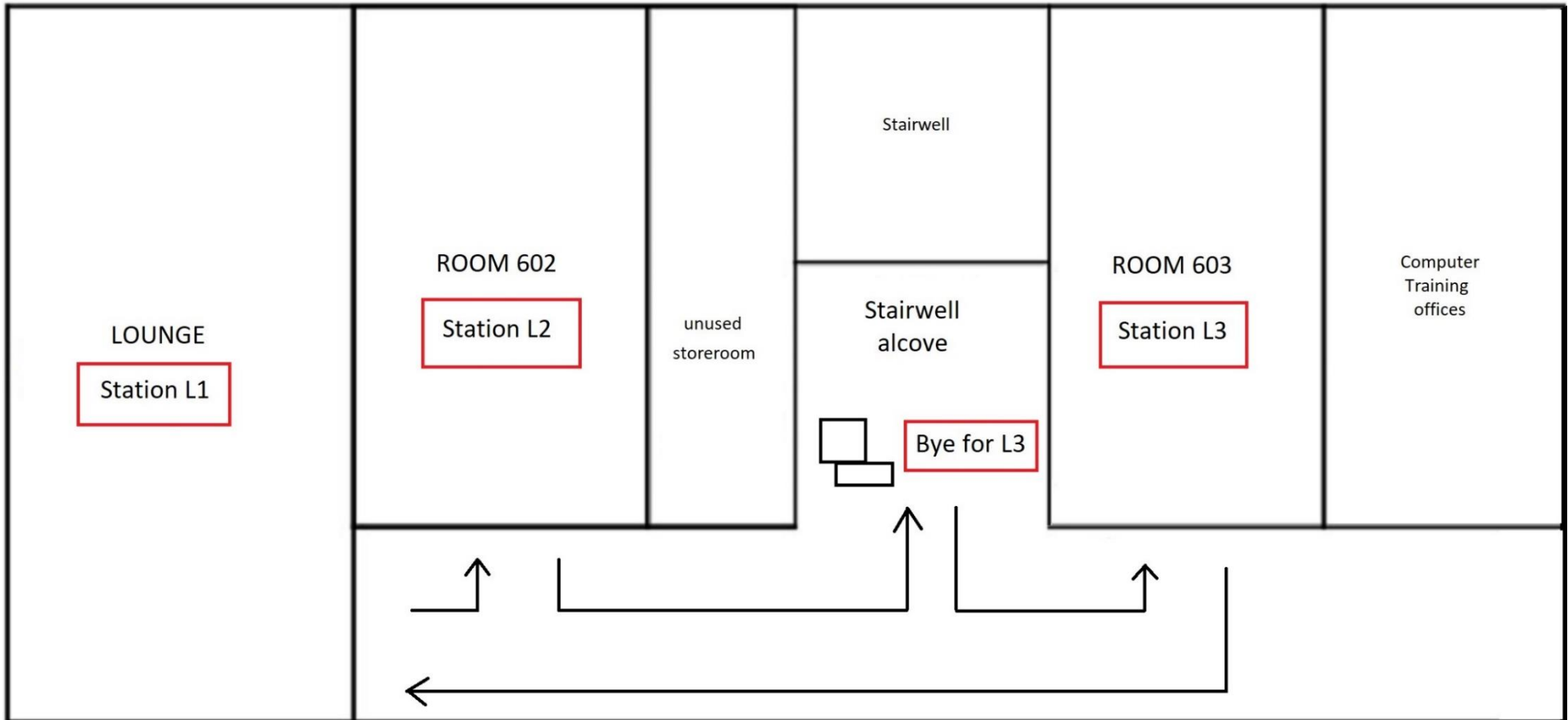
Boris Arora; Clianna Lavelle; Ingrid O'Connor; Karim Salem

FLOORPLAN - SHORT STATIONS (not exact or to scale)



In the real thing there are 8 examined short stations, with 2 inactive bytes in addition, to manage the numbers (a candidate cohort of 10)

FLOORPLAN - LONG STATIONS (not exact or to scale)



In the real thing the cohort of 10 candidates splits into 2 groups – with 3 examined stations in each cycle and two byes (one might be an active bye, the other's inactive)